



Greek Task Force



Donating to the GTF Scholarship: A Gift to UM's Greeks!

Our best guess is that right now you have a 'to do' list that probably rivals Santa Claus's (except without the staff of elf-laborers and no-gasoline, low-emissions reindeer transport to help get it all done). We start out the season seeking the perfect gift and trying to get the home perfect (or at least acceptable) for guests and decorated for the entertainment of passers-by. By mid-season, we're starting to compromise, no longer looking for that perfect

gift and instead looking for that one-size-fits-all gift because, after all, it's the thought that counts.

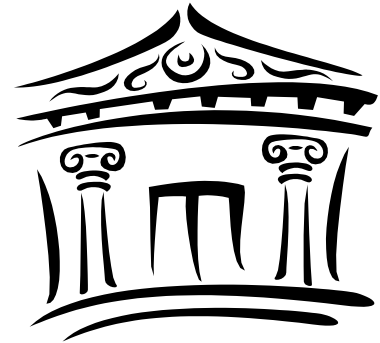
When it comes to the UM Greek Task Force and helping support our Greek heritage and future at The University of Montana, you don't need to compromise. It's true! It *is* the thought that counts and, even better, the perfect gift is your gift because *your* gift is what we have been waiting for!

As many of our UM Greek alumni may know, the Greek Task Force has

been building a scholarship fund for the last couple of years. This scholarship fund is used to encourage students to "Go Greek!" since only UM Greeks may benefit from the endowment. Not only are these scholarships a compelling recruitment tool, their presence reaffirms our commitment to positive Greek culture where scholarship and leadership are held dear.

Thanks to the generosity of our many supporters,

(Continued on p. 3)



Special points of interest:

- Chapter Update: Sigma Phi Epsilon
- Items of Interest
- Greek Task Force: Looking Ahead, Organizational Structure
- Homecoming 2009: 100-Year Celebrations for KKIΓ and KAΘ

Greek Task Force: Looking Ahead

As we ring out the old year and bring in the new, it is a good opportunity to address where the Greek Task Force is going in 2010 and beyond. When the Greek Task Force was founded in 2004 by a small group of committed individuals, we were focused on the immediate problem at hand: how to build awareness of the benefits Greek and our traditions and values bring to the University of Montana and engage other like-minded alumni to respond to the call to help keep

Greek viable. Although there is still much work ahead, we feel successful in many ways with recruitment numbers increasing, academic performance improving, and stronger ties evident between the alumni and college members, as well as a growing number of Greek alumni who want to come on board to help Greek improve further.

It is this latter point where we feel the GTF has great opportunity going forward. As the GTF enters its sixth year, we are in a posi-

tion to assess how we can best harness, organize, and leverage the talent and person-power being offered to take the GTF to its next stage, positioning our team to continue to support UM Greeks.

Effective 2010, we will be implementing a tiered organizational structure (see diagram, next page). At its head, we have our administration team which will include the people whose names are most familiar to you: Brian Dirnberger, (ΦΔ

(Continued on p. 2)

Learn More...

Brian Dirnberger
President, Greek Task Force (GTF)
h. (406) 327-5429
e. bwdirnberger@aol.com

Ken Lawrence
GTF Kitchen Cabinet
h. (210)493-7936
e. klawrence1@satx.rr.com

Ashley Young Fuchs
GTF Newsletter Editor
e. ashleyfuchs@hotmail.com

Timberly Marek
GTF Newsletter Editor
c. (503) 860-3769
e. timberly.theta@gmail.com

Tyson McLean
UM Greek Life Advisor
c. (406) 243-2005
e. Tyson.Mclean@mso.umt.edu

Cont'd. Looking Ahead *(Continued from p. 1)*

⊙ GTF president; Bernd Schulte (ΦΔΘ) as our chairman; and Ken Lawrence (ΣΑΕ), GTF coordinator.

In addition, we will have four areas or committees that will focus on Communications (including the newsletter and social media/networking), Scholarship/Service, Alumni Relations & Outreach, and Fundraising/Accounting.

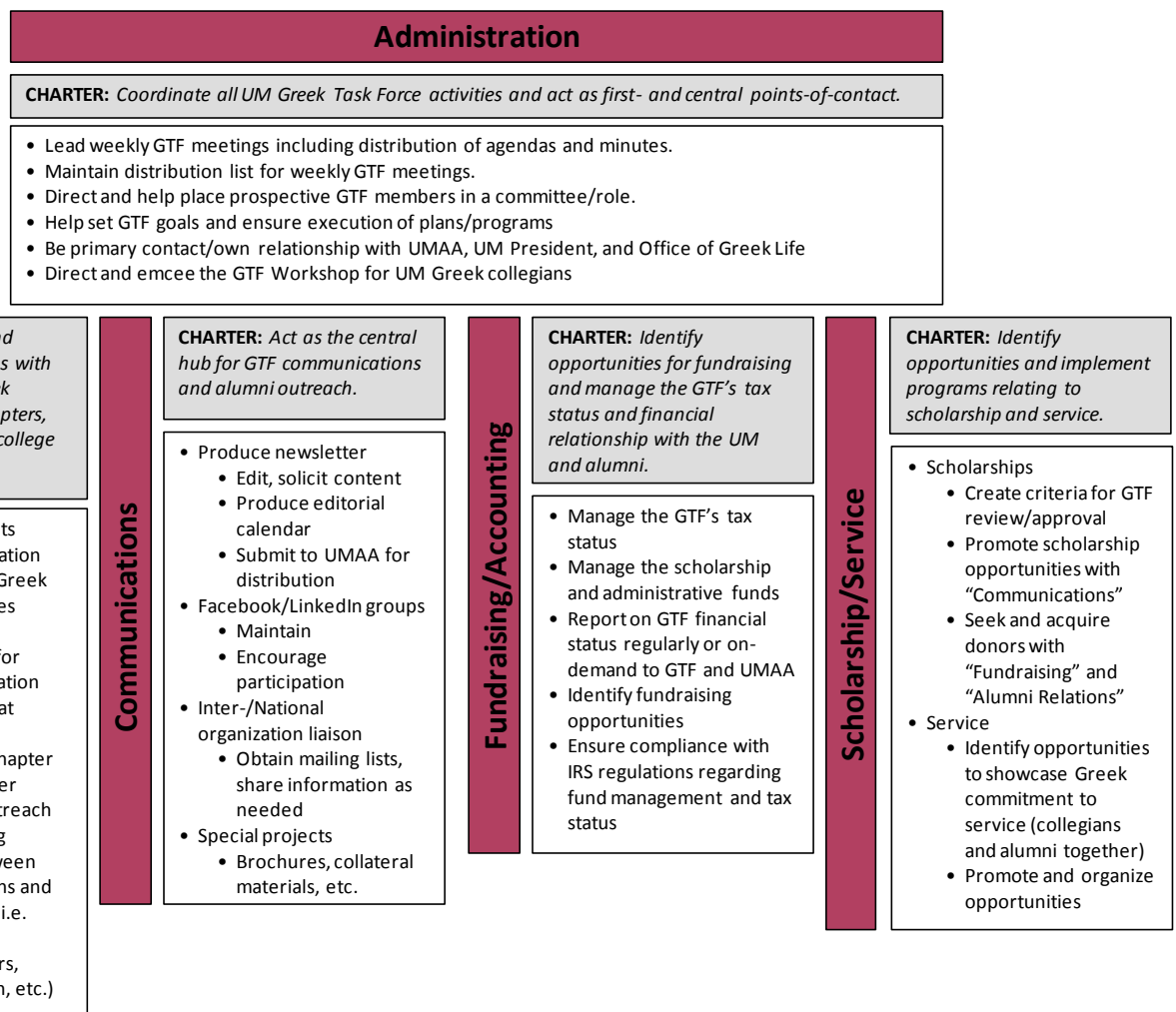
There will be committee leads or chair people for each of these areas who will coordinate the area's activities and act as a point-of-contact to on-board new committee members. The responsibilities for each area are defined in the diagram below.

What is left in this picture is you: How do you want to be part of Greek at UM for the next 100 years? Many of our alumni are content simply making donations to the GTF scholarship or administrative fund. We appreciate that deeply since without those contributions, we could not keep the doors

open. But if you're someone who would like to be involved beyond the pocketbook, we want to speak with you!

We are currently seeking individuals to chair each of our four committees and take on various responsibilities within them. Volunteers from all graduation years, Greek affiliation (whether currently on campus or not), and located anywhere are invited to make themselves available. The only requirements are that you support Greek life and its values, believe in the potential it has to offer UM students, and have the time to give (estimated at 4-10 hours monthly depending on desire, role, and season).

To learn more or take on a leadership position, please contact Timberly Marek (timberly.theta@gmail.com) or any other member of the Greek Task Force for more information. Thank you, in advance, for your help, support, and contributions of time and talent. Ω



Cont'd: The Gift of Greek *(from p. 1)*

we have been able to create a sizable fund. We have been able to make disbursements from this fund, offering scholarships to young men and women as recruitment, retention, and academic excellence incentives. However, this scholarship fund is not yet at the level it needs to be in order to be self-sustaining, particularly in this economic environment. To achieve that, we need your help.

We ask that every Greek alumnus contribute to the UM GTF Scholarship Fund. A contribution of any amount is appreciated but if you're trying to find an appropriate starting amount, we encourage an annual starting donation of \$20 or perhaps a donation of \$5 for each year since initiated (e.g. if initiated 10 years

ago, consider a donation of \$50). All donations are welcome!

This is a gift you are making to not only UM's Greek students of today but also a fulfillment of a promise you made to your fraternity or sorority when you pledged: to promote its advancement and ensure its welfare. It is a gift you give to yourself, too, because through your support, the legacy of Greek at UM can continue for you to enjoy – homecomings, graduations, and impromptu mid-year visits for years to come. Even if your chapter is no longer at UM's campus, we hope that you will still consider a donation in the hope that your chapter may return and in recognition of the opportunity that Greek life offers young men and women.

All donations are tax-deductible and managed through the UM Foundation. You may donate via the UM Foundation Web site or by mailing a check to the UM Foundation at PO Box 7159, Missoula MT 59807. Please indicate on your check or online contribution "UM GTF Scholarship Fund" so the funds are appropriately reserved.

Through your generosity, not only can you easily mark off the list "support The University of Montana Greeks in 2009," but you can be part of our efforts to demonstrate that we believe in our organization's mottoes and creeds, as well as the leadership, scholarship, and outreach opportunities that are available at UM. Thank you! Ω

Breaking News!

*An anonymous benefactor has offered to match any donations to the GTF fund up to \$10,000! If you are considering making a donation to the GTF in any amount, **NOW** is the time to do it!*



Data to be shown on the UM Greek Task Force Roster of Supporters:

Name _____ Phone _____ E-Mail _____

Address _____ City _____ State _____

Greek Affiliation _____ GTF Scholarship Donation \$ _____

(Please clearly designate that your donation is for the benefit of the GTF Scholarship Fund)

Method 1. Check: The Univ. of Montana Foundation, PO Box 7159, Missoula, MT 59807

Method 2. Credit card: Visa MasterCard American Express Discover

Credit Card # _____ CV # (3or4-digit code on card) _____ Exp. Date _____

Method 3. Give online at <http://umfoundation.onlinemontana.com>

Items of Interest

Fall 2009 Recruitment

Congratulations to all of the UM Greek chapters for a successful recruitment this autumn! Each of the four sororities had enough women pledge to meet or exceed their quota. The men also did well with recruitment as they broadened their outreach on campus to identify men who fulfill the Greek ideal. As of October, there are approximately 310 initiated and uninitiated/pledged Greek young men and women at the University of Montana. While we expect this number to fluctuate somewhat for a variety of reasons (including graduation, transferring, additional recruiting, and students choosing to not be initiated), we note with enthusiasm and support the efforts the UM Greeks are making to increase their population making strides toward accomplishing their goal for the number of Greeks to exceed 6% of the UM student population by 2011. A full recruitment report will be made available in the spring issue.

UM Greeks Academic Report Spring 2009

Greek membership brings with it many opportunities, including the attainment of individual academic excellence. Thanks to a variety of chapter-initiated incentive programs, support from alumni, the encour-

agement of the UM Administration and Greek Life Office, and the availability of scholarships offered by the Greek Task Force (thanks to the generosity of UM alumni), chapter academic performance continues to improve. Following are the grades (listed alphabetically) as reported by the chapters based on their spring 2009 performance. (Fall 2009 grades will be reported in the spring newsletter.)

Women's Organizations

Alpha Phi - 3.04 (Fall 2008: 2.79)
Delta Gamma - 3.05 (Fall 2008: 2.79)
Kappa Alpha Theta - 3.11 (Fall 2008: 2.85)
Kappa Kappa Gamma - 3.16 (Fall 2008: 3.10)

Men's Organizations

Kappa Sigma - 2.84 (Fall 2008: 2.58)
Sigma Alpha Epsilon - 2.49 (Fall 2008: 2.98)
Sigma Chi - 2.54 (Fall 2008: 2.51)
Sigma Nu - 2.87 (Fall 2008: 2.74)
Sigma Phi Epsilon - 3.14 (Fall 2008: 3.06)

Regardless of where a chapter ranked, all of the brothers and sisters worked hard to not only deliver their personal best but encourage it in others. As mentioned in previous issues of the newsletter, one of the UM Greeks' goals is to consistently have an all sorority aver-

age (ASA) above the all women's average (AWA) and an all fraternity average (AFA) above the all men's average (AMA). The UM Greeks came very close to meeting this goal in 2009 with a ASA (sorority) of 3.09 which is *equal to* the all women's average, and an AFA (fraternity) average of 2.77 compared to the all men's average of 2.83.

No matter which Greek chapter young men and women call their own, our youngest brothers and sisters are first and foremost students, a responsibility they take seriously. If you would like to join the Greek Task Force or any of these chapters in a partnership to help students improve their academic performance, please contact us at umontana.gtf@gmail.com or reach out to your Missoula alumni/alumnae chapter or college chapter advisory board. Opportunities include making a tax-deductible donation to the GTF scholarship fund, providing snacks during dead week/study hours, offering to help tutor, being a mentor, offering an internship, and more. You need not limit your help to only your own chapter! In the spirit of interfraternal excellence, we encourage all Greeks to help each other as we Make Greek Great at The University of Montana. Ω



Aristotle

Aristotle Says...

You can always learn more about what's happening on campus by visiting these online resources:

- Office of Greek Life: <http://www.umt.edu/greek/>
- UM Foundation: <http://www.umt.edu/umf/campaign/default.htm>
- UM Home: <http://www.umt.edu/>



Homecoming 2009: Sweet Home Montana!

Homecoming 2009...Singing on the Steps, the Lighting of the M, the annual Homecoming Parade, floats, tailgates, football, class reunions...and for two University of Montana Greek chapters, the celebration of 100 years at the University of Montana!! Congratulations to Kappa Alpha Theta and Kappa Kappa Gamma...100 years of sisterhood!!

KKΓ

Contributed by Mary Lou Hauck, KKT

Beta Phi Chapter of Kappa Kappa Gamma celebrated 100 years at the University of Montana at the recent Homecoming weekend of Oct. 9-11. Over 280 Kappas attended the events over the 3 days. The Friday evening parties were small group gatherings by year of initiation at various homes or locations around town. The Sat. evening banquet was attended by 424 at the Doubletree Hotel. The Emcee for the evening was Lila Isbell, Fraternity Executive Director from 2001-2005. The program included guest speakers Suzanne Vander Heyden, Fraternity Director of Alumnae and John Rimel, historian and great grandson of the original owner of the Kappa

house. There were also pin presentations for 50, 65 and 75 year members, and music selections by the Kappa Keys Quartet. Fund raisers included a silent auction and a drawing for sapphire jewelry. The Sun. morning brunch at the Kappa house served about 300. There were Kappas from the classes of 1935 to 2009 and some who came from as far away as Australia or New York. All came to renew the friendships from their years as Beta Phi members. It was heartwarming to see so many in attendance and a great tribute to the Greek system. This has been called "The Kappa party of the century!!"

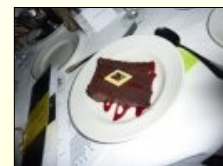


KAΘ

Contributed by Ashley Young Fuchs, KAΘ

The Alpha Nu chapter of Kappa Alpha Theta celebrated 100 years of sisterhood during Homecoming weekend 2009. Several hundred Thetas attended three days of events, including Friday night's social at the Governor's Room in the Florence Hotel, tours of the UM campus and newly renovated Theta chapter house, Saturday morning breakfast and pre-game festivities, and Saturday night's Gala celebration at the Hilton. The Gala was emceed by Theta alumna Jill Valley,

and included contributions from alumnae and active members alike. A silent auction, musical entertainment by pledge classes, and touching audio-visual presentation rounded out the evening. Friendships were renewed, members of long-ago pledge classes reunited, as all paid tribute to the foundation of love shared among sisters. Special thanks to Lori Torgerson Warden and the Gala Celebration committee, who poured much time, energy, and love into this amazing, and truly unforgettable event!!



Sigma Phi Epsilon: New Frontiers *(Contributed by Derek Duncan, ΣΦΕ, '09)*

ΣΦΕ

*To learn more
about the current
status of the
Sigma Phi
Epsilon chapter at
UM, contact Pat
Angland or Derek
Duncan.*

After a challenging spring and summer, the Sig Ep chapter is once again going strong at UM. A newly established Alumni and Volunteer Corporation (AVC) has been working with the new undergraduates to guide chapter operations and recruitment. Members of the AVC board, led by President Brint Wahlberg, are Mike Markovich, Erick Tombre, Erik Nelson, Pat Angland, Derek Duncan, Charlie Palmer and Chris Corbin. The group is meeting regularly, and excited to advance the chapter in Missoula, as well as connect the larger community of Sig Ep alumni.

The chapter, a presence at UM since 1918, had risen to the largest on campus with the highest GPA in Fall 2008. During the winter, however, internal challenges and conflict began to strain the chapter. After three years of strong growth, there were still remnants of a “frat boy” culture that wasn’t conducive to the new direction the fraternity was taking.

It was decided that strong action needed to be taken and the members in question removed from the chapter. Unfortunately, alumni support was limited at that time, and undergraduate leaders found themselves unable to manage the fall-out from such a controversial decision. Chapter membership declined from near 40, to 12 members over the course of the semester. This decline left Montana Alpha unable to meet its lease capacity for the facility for the coming year.



The former Sigma Phi Epsilon facility, located at 201 University Avenue. Sig Ep will continue to operate, in an un-housed capacity, as they strive to increase membership and strengthen the Montana Alpha chapter.

The board of directors of the national fraternity voted to suspend the chapter’s charter, and the National Housing Corporation put the facility up for sale. To renew the ailing chapter, representatives from the national fraternity assisted in recruiting and training the AVC with a seven-member board of directors, and a larger group of interested volunteers. The New Chapter Expansion team from Sig Ep spent a full month on campus, recruiting and training new undergraduates for the chapter. Their efforts were very successful, and the chapter currently has 16 new members. While the AVC explores various options, the chapter will operate in an un-housed capacity, which is not uncommon for fraternities across the country.

As is often the case, a private developer was able to take much quicker action than the AVC, and purchased the facility this fall. Fortunately, at this time, there are no known plans to demolish the house.

Members of the AVC are excited to move forward and build a stronger, more stable Sig Ep experience at the University of Montana. We have learned that alumni support is not just a convenience for a college fraternity, but is a necessity for long term viability. The AVC will also be examining options for future housing.

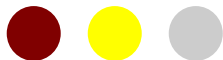
As fraternities grow into their 21st century roles on campus, there are many challenges and hurdles to remove, which cannot be done without the investment and interest of administrators, educators, alumni and volunteers.

A comprehensive Alumni Newsletter will be sent to Sig Ep alumni and supporters this holiday season. Anyone wishing to learn more is encouraged to contact Pat Angland at panglan@netzero.net or Derek Duncan at

derek@derekduncan.net. Ω



The University of Montana—



209B University Center
University of Montana
Missoula, MT 59812
(406) 243-2005 phone
(406) 243-4340 fax
<http://life.umt.edu/greeklife/>
E-mail: umontana.gtf@gmail.com

Greeks at UM...

[Alpha Phi](#) | [Delta Gamma](#) |
[Kappa Alpha Theta](#) |
[Kappa Kappa Gamma](#)

[Kappa Sigma](#) | [Sigma Alpha Epsilon](#) |
[Sigma Chi](#) | [Sigma Nu](#) |
[Sigma Phi Epsilon](#)

Who Is the Greek Task Force?

The Greek Task Force is an organization of UM Greek men and women, primarily alumni, who work to perpetuate Greek life on The University of Montana campus, a legacy extending back more than 100 years. We do this through supporting, nurturing, and advancing Greek ideals, promoting recruitment, and helping build a strong Greek student body at The University of Montana.

We believe that Greek life offers students a unique opportunity to have a balanced college life with a focus on academic excellence, brotherhood/sisterhood, community service, and responsible social interaction. It allows students to make lasting friendships with individuals holding similar ideals and common purposes.

For more information about UM Greek Life or the Greek Task Force, please contact one of the individuals listed on the cover page.

IT'S GREAT TO BE GREEK!

— Since 1909 —



ΑΔΠ

ΦΣΚ

ΚΑΘ

ΣΝ

ΦΔΘ

ΔΔΔ

ΑΞΔ

FIJI

ΚΔ

ΣΚ

ΣΦΕ

ΣΧ

ΚΚΓ

ΘΧ

ΔΓ

ΣΑΕ

ΑΟΠ

ΚΣ

ΔΣΘ

ΑΧΩ

ΑΦ

ΦΚΦ